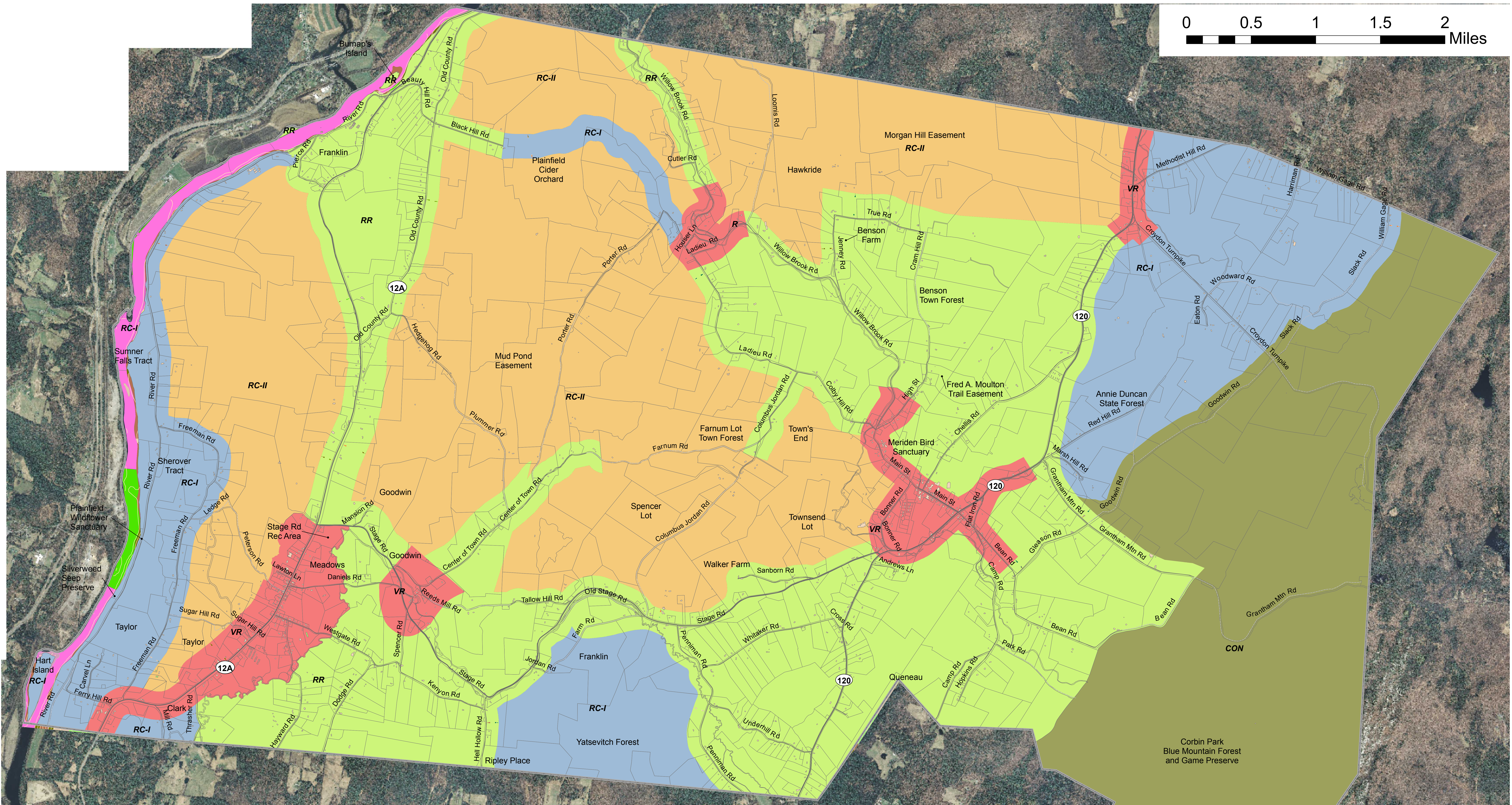
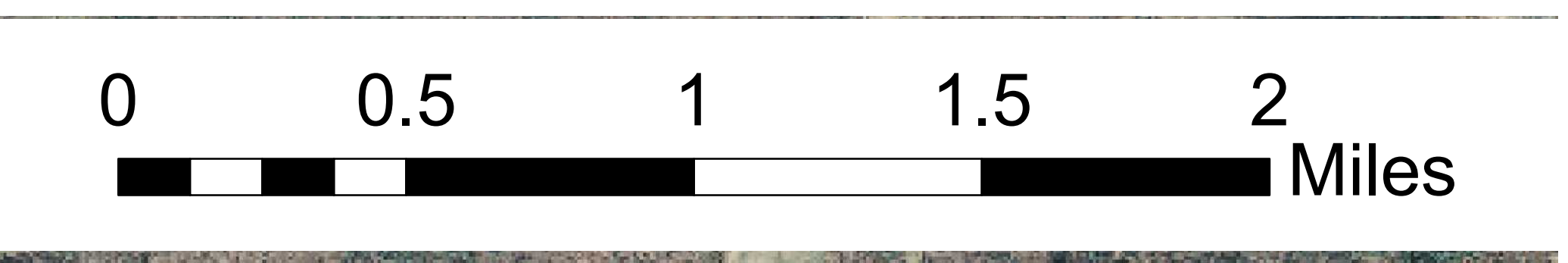


Interactive Map of Natural Resources in Plainfield, NH



Legend

<ul style="list-style-type: none"> Town Line Public Roads <ul style="list-style-type: none"> State Road Local Road Class VI Road Parcel Lines Buildings Condos 	Zoning Districts <ul style="list-style-type: none"> CON - Conservation RC-I - Rural Conservation-I RC-II - Rural Conservation-II RR - Rural Residential VR - Village Residential 	Agricultural Soils <ul style="list-style-type: none"> All areas are prime farmland Farmland of statewide importance Farmland of local importance Forest Soils Groups <ul style="list-style-type: none"> Group IA Group IB Group IC Group IIA Group IIB 	Protected Lands <ul style="list-style-type: none"> Agricultural Restriction Conservation Easement Deed Restriction Privately Owned Owned by Town Owned by State 	Top-Ranked Wildlife Habitat <ul style="list-style-type: none"> Highest Rank Habitat in NH Highest Rank Habitat in Biological Region Supporting Landscapes Unfragmented Lands <ul style="list-style-type: none"> 25 - 100 acres 100 - 500 acres 500 - 1,000 acres 1,000 - 4,000 acres 4,000 - 10,000 acres 	<ul style="list-style-type: none"> Ponds Connecticut River Permanent Streams Aquifers Special Flood Hazard Areas National Wetlands Inventory 	Watersheds <ul style="list-style-type: none"> Bloods Brook Blow-me-down Brook Lower Mascoma River North Branch Plainfield Tributaries to Connecticut River Sawyer Brook-Stocker Brook-Eastman
---	--	--	--	---	--	--

PLEASE NOTE: Not all protected lands are available for public access and accessibility should not be assumed. For specific questions on public access, please contact the agency or organization that holds the conservation restrictions.
 Data Sources: Town tax parcel, buildings and zoning data from the Town of Plainfield, current to 04/2012. Roads data from NHDOT, 2010, updated by Town and UVLSRPC, 2011. USGS elevation contours from UVLSRPC, 1998. Agricultural and forest soils from Sullivan County Soil Survey, 2006. Protected lands from NH GRANIT, with updates by UVLT, 2010. Corbin Park data developed by UVLSRPC, 2008. Top-ranked wildlife habitat from the 2010 Wildlife Action Plan published by NH Fish and Game. Unfragmented lands analysis completed by The Nature Conservancy for the 2006 Wildlife Action Plan, refined by UVLSRPC. Water features and watersheds from the NH Hydrography Dataset, 2006. Aquifers mapped by US Geological Survey, 1998. Wetlands mapped by US Fish and Wildlife Service, 2002. Data (other than Town data) distributed by NH GRANIT, the state's GIS clearinghouse.

